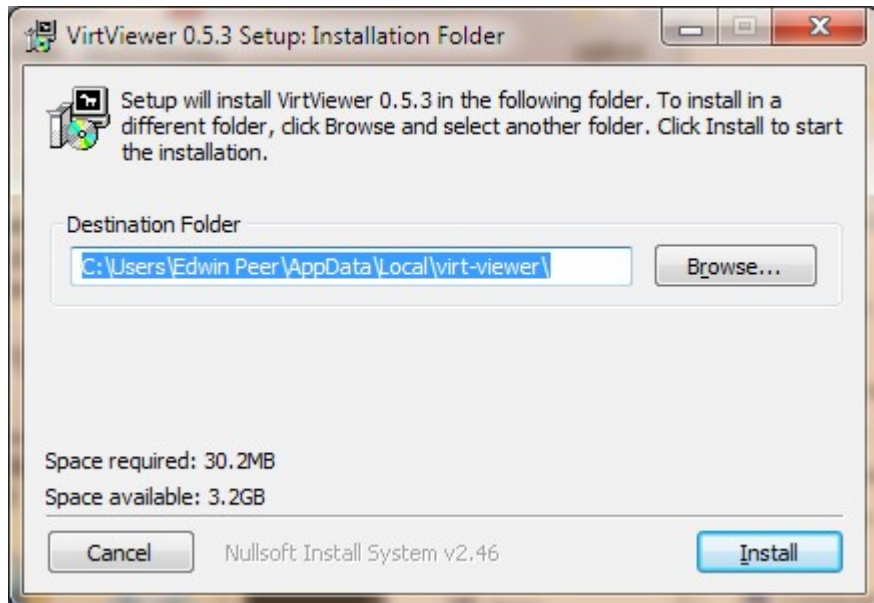


SPICE client instructions for isoho.st

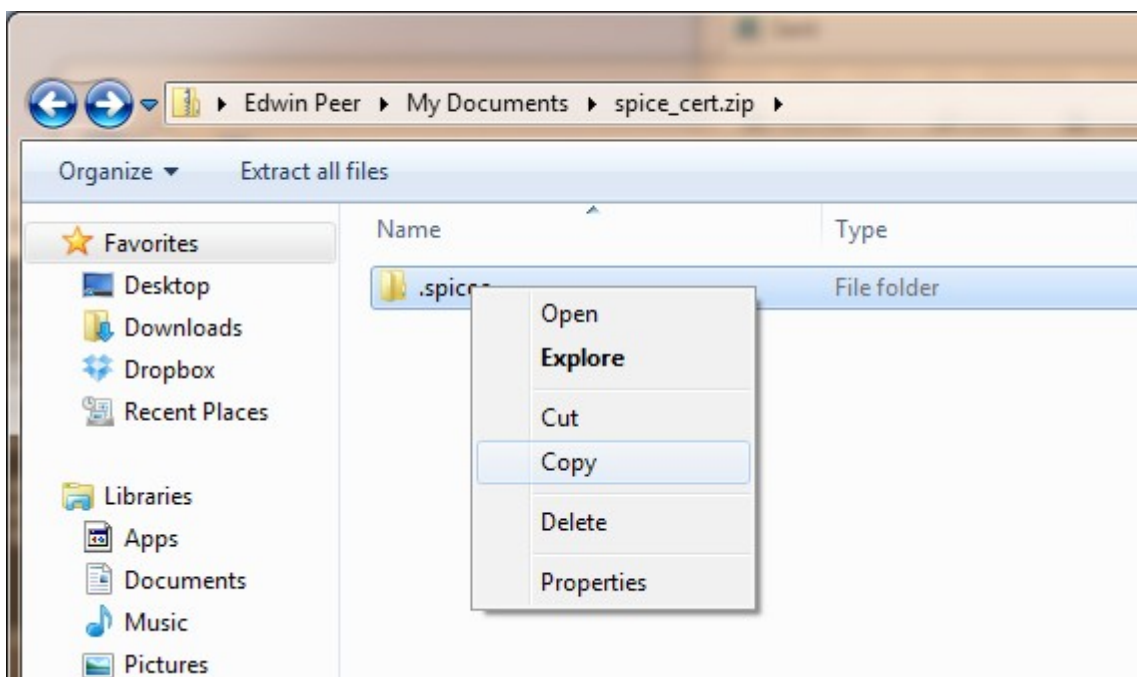
1. Download the following three files from <http://isoho.st/tools>:

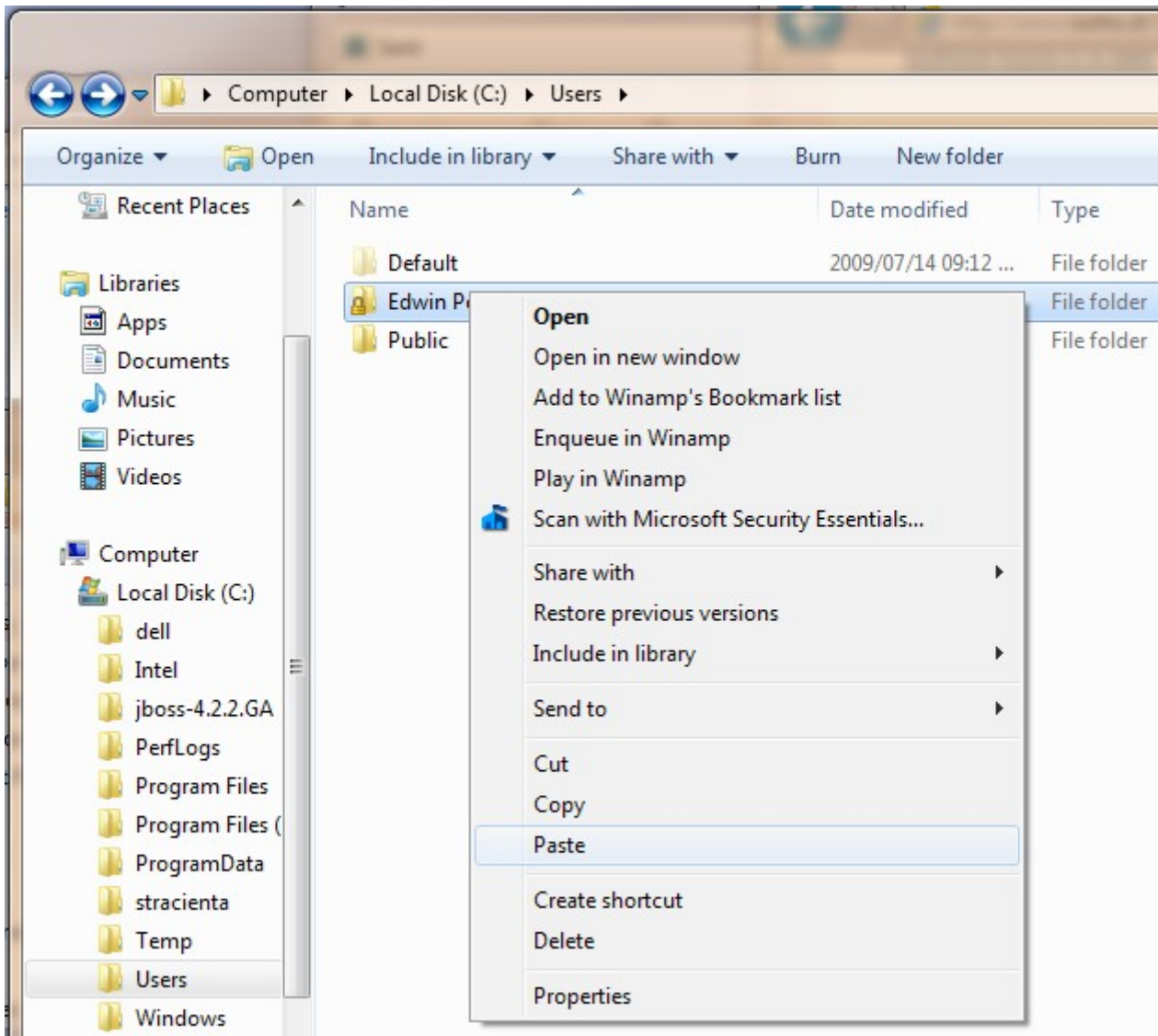
- virt-viewer-0.5.3_x86.exe / virt-viewer-0.5.3_x64.exe (depending on Windows version)
- spice_cert.zip
- putty.exe

2. Install virt-viewer remote desktop client:



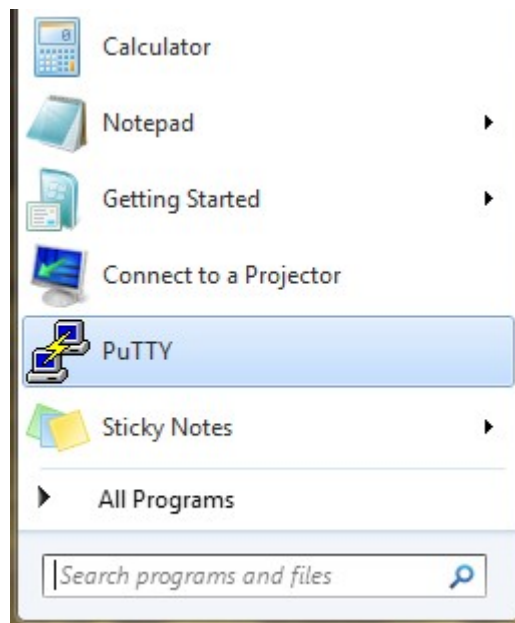
3. Install SPICE server certificate from the zip file into your user home directory (copy 'n paste):



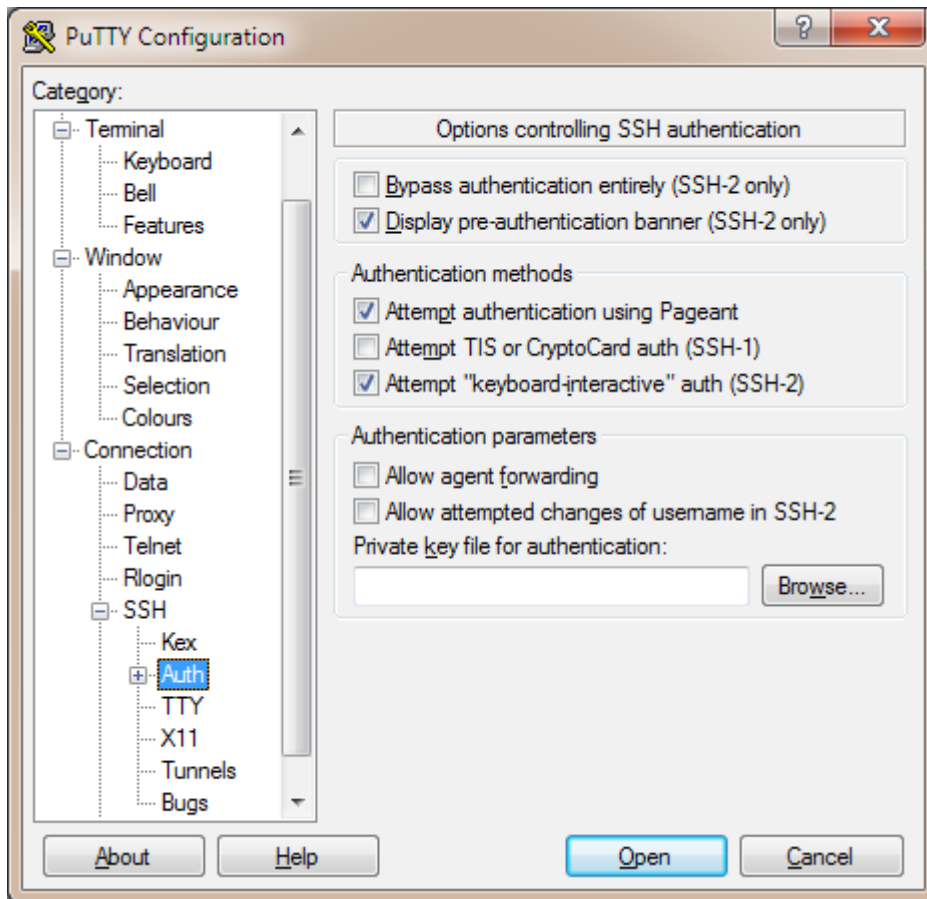


(note the .spicec folder should be placed at the top level of your user directory)

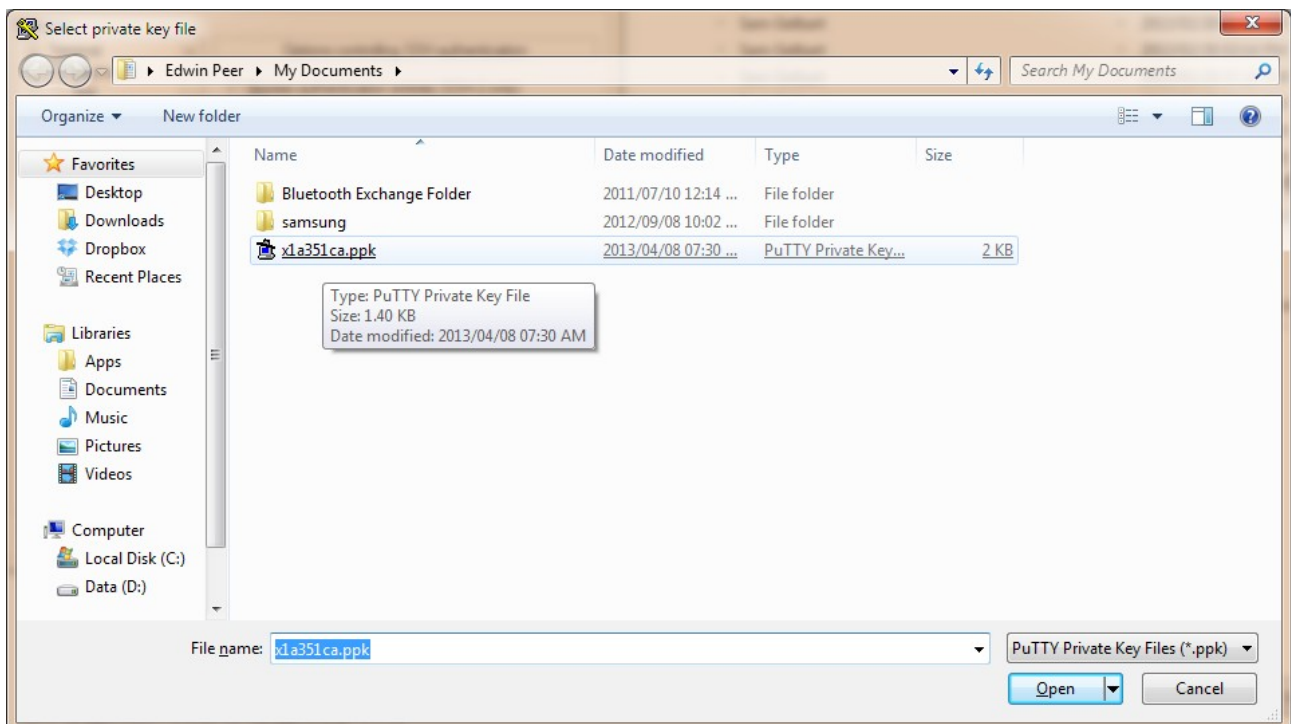
5. Launch PuTTY:



6. Navigate to the "Connection -> SSH -> Auth" configuration tab:

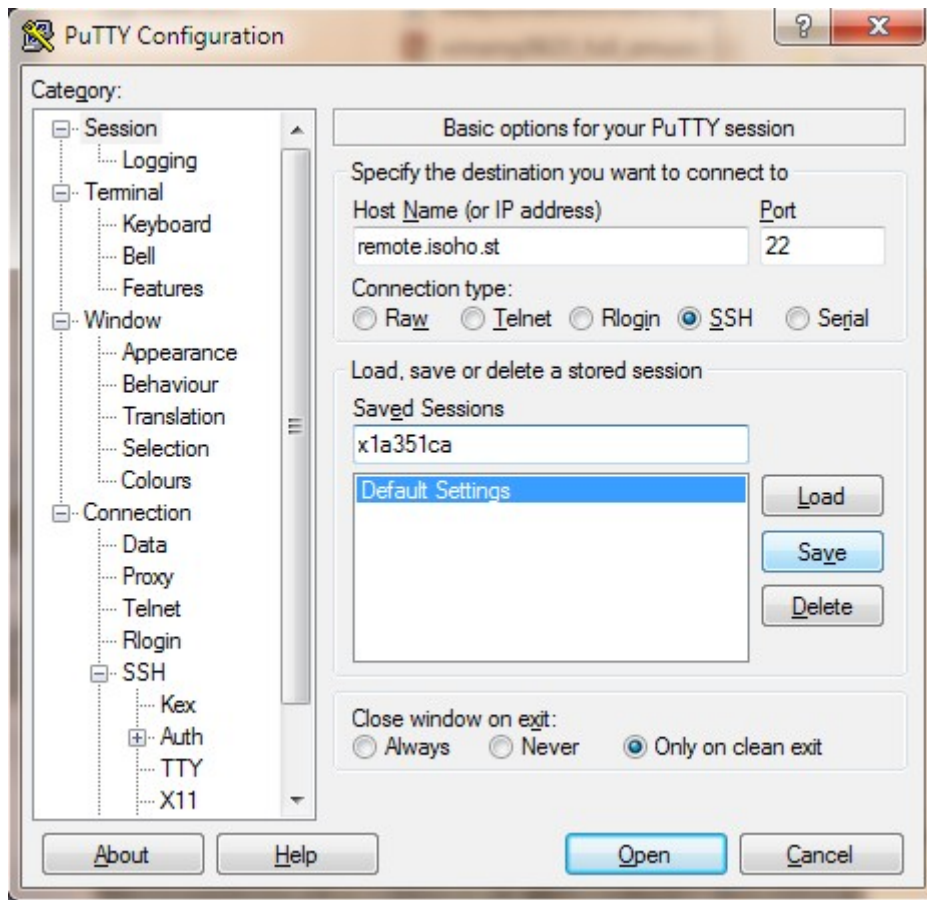


7. Select the "private key file for authentication" by Browing for the .ppk file you received in your isoho.st welcome email:

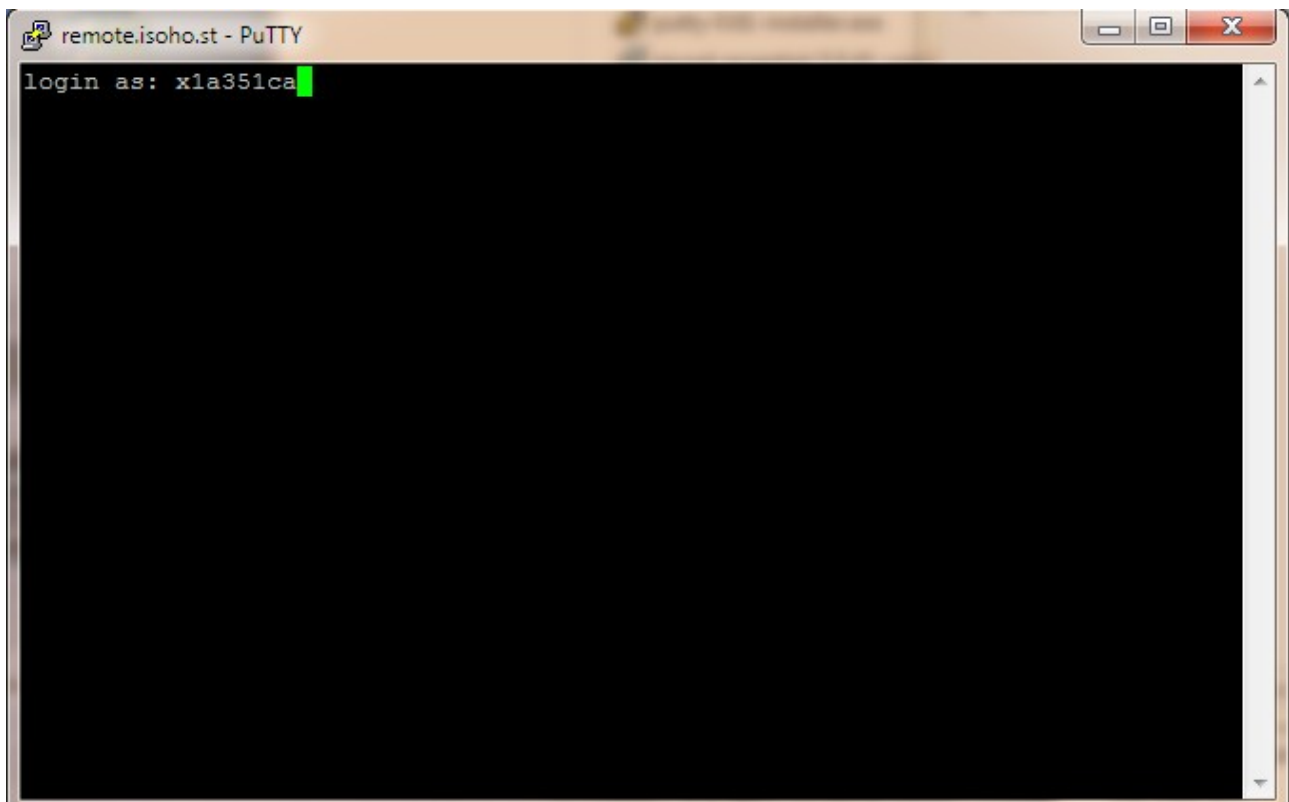


8. Under the "Session" tab, key in remote.isoho.st as the host name and "Open" the connection to the machine management interface. The PuTTY session may also be saved for future use so that

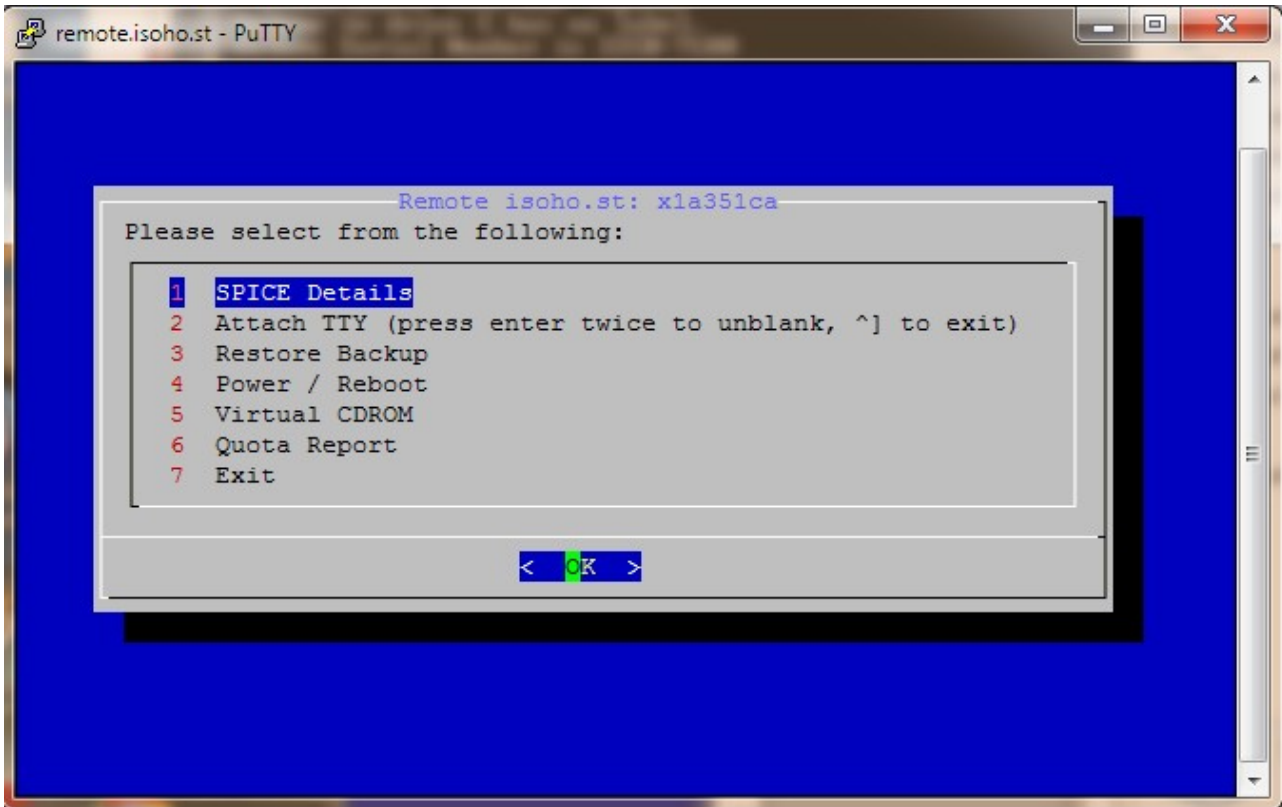
the authentication key does not have to be explicitly reconfigured for every connection attempt as was done in step 6 and 7 above.



9. Use your isocho.st machine ID as the SSH login name:



10. The SPICE connection URL and password can be obtained by selecting "SPICE Details":



11. Launch virt viewer and key in the URL obtained in step 10 above. You will next be prompted for the password after which you will be connected to your isocho.st remote screen, keyboard and mouse interface:

